

300x450mm

ELEVATION
CONCEPT

DIGITAL
WALL TILES



Step into the World of Exquisite Luxury Tiles

Welcome to ARM Global, where artistry meets innovation in the realm of luxury tiles. Our collection is a testament to impeccable craftsmanship, designed to transform ordinary spaces into extraordinary experiences. Each tile in our collection is a fusion of aesthetic brilliance and functional excellence, reflecting our unwavering commitment to quality and elegance.

Why ARM Global's Luxury Tiles are the Epitome of Sophistication

- Our tiles are curated to cater to the most discerning tastes, from timeless classics to avant-garde modern designs. Each piece is a work of art, meticulously crafted to enhance the beauty of your interiors.
- Embrace cutting-edge technology and trendsetting designs that redefine luxury. Our tiles offer superior performance and unmatched beauty, setting new benchmarks in the industry.

Explore our stunning range and let ARM Global's luxury tiles be the canvas upon which you create your masterpiece.



SAND STONE-05





SAND STONE-01



SAND STONE-02



SAND STONE-03



SAND STONE-04



SAND STONE-06



SAND STONE-07



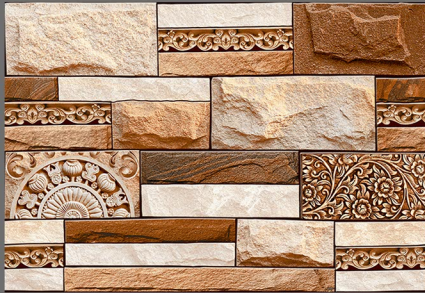
SAND STONE-08



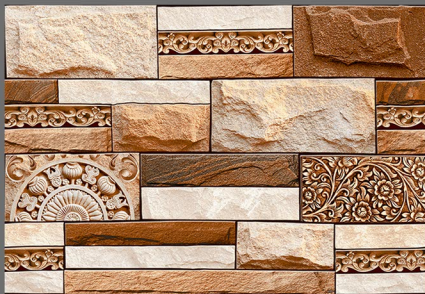
SAND STONE-09



SAND STONE-10



MONTANA-01





SAND STONE-11



SAND STONE-12



SAND STONE-13



SAND STONE-14



MONTANA-02



MONTANA-03



MONTANA-04



MONTANA-05



MONTANA-06



MONTANA-07



MONTANA-08



MONTANA-09



MONTANA-10



MONTANA-11



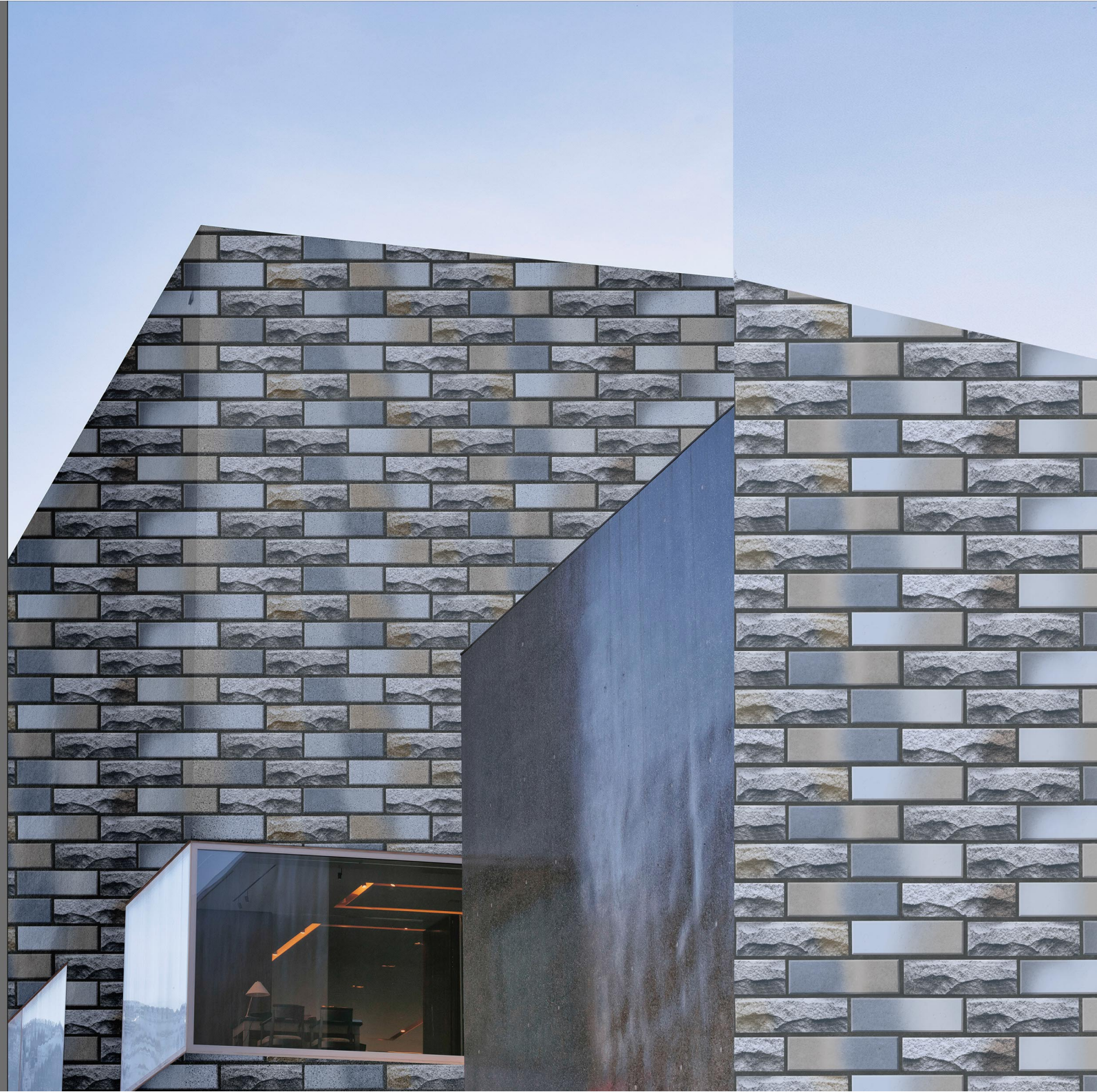
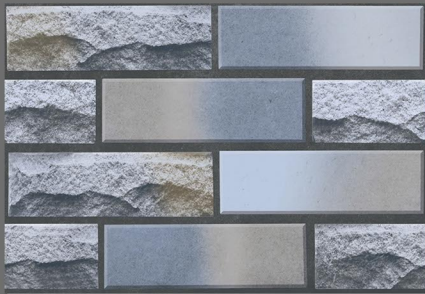
MONTANA-12



MONTANA-13

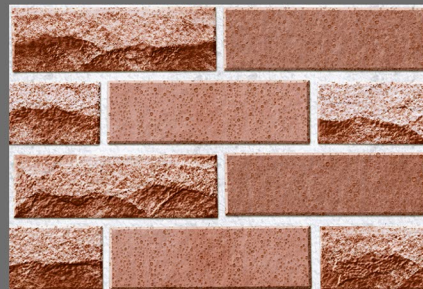


RIVER STONE-01





RIVET STONE-02



RIVER STONE-03



RIVER STONE-04



ROCK STONE-01



ROCK STONE-02



ROCK STONE-04



ROCK STONE-05



ROCK STONE-06



ROCK STONE-03 A

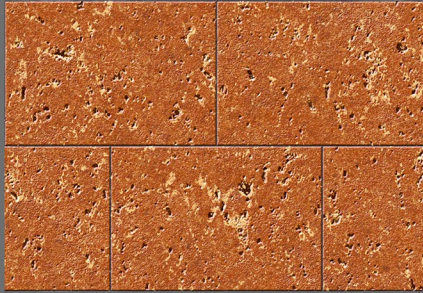


ROCK STONE-03 B

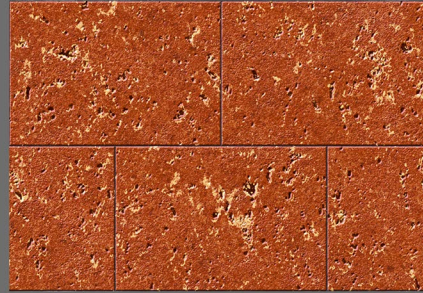


ROCK STONE-03 C





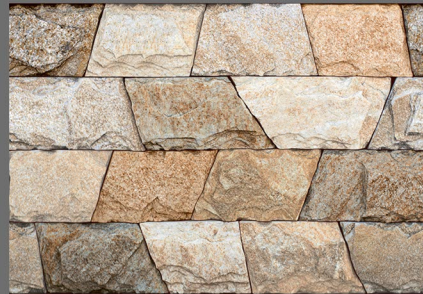
TRAVER STONE-01



TRAVER STONE-02



CANNY STONE-01



CANNY STONE-02



CANNY STONE-03



BRICK-01



BRICK-02



BRICK-03



BRICK-05





BRICK-04



BRICK-06



BRICK-07



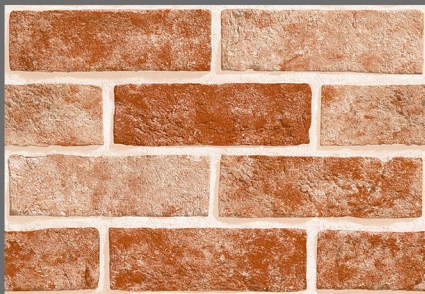
BRICK-08



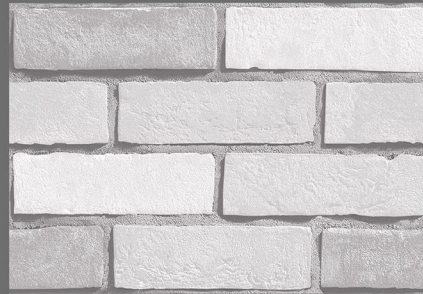
BRICK-09



BRICK-11



BRICK-12



BRICK-13



BRICK-14



VILLA STONE-07

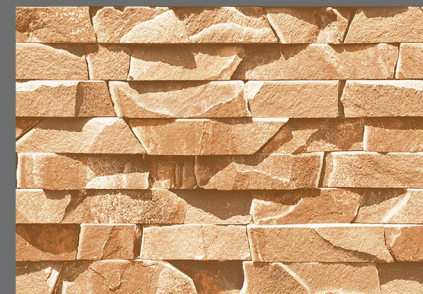




VILLA STONE-01



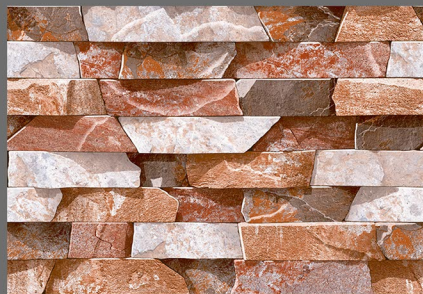
VILLA STONE-02



VILLA STONE-03



VILLA STONE-04



VILLA STONE-05



VILLA STONE-06



VILLA STONE-08



VILLA STONE-09



VILLA STONE-10



VILLA STONE-11



VILLA STONE-12



VILLA STONE-13



VILLA STONE-14



JADE-01



JADE-02



JADE-03



JADE-10





JADE-04



JADE-05



JADE-06



JADE-07



JADE-08



JADE-09



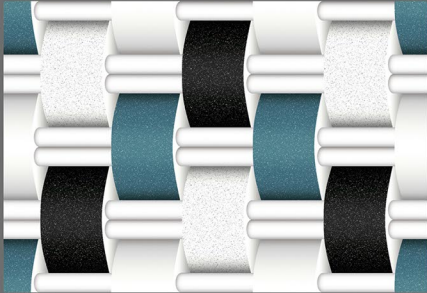
JADE-11



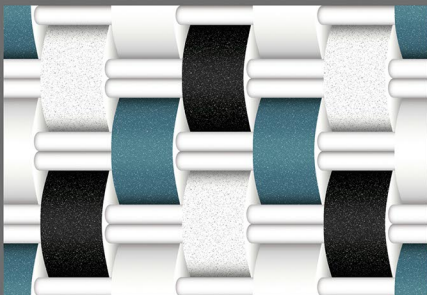
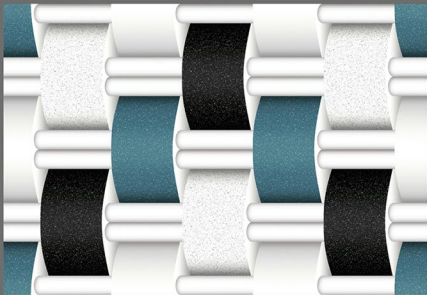
JADE-12



JADE-13

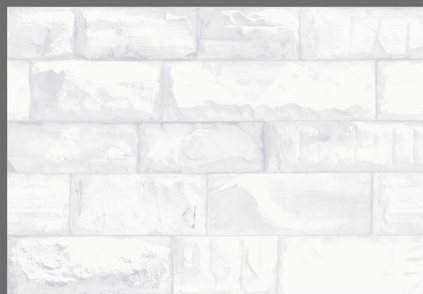


EL-AC-04





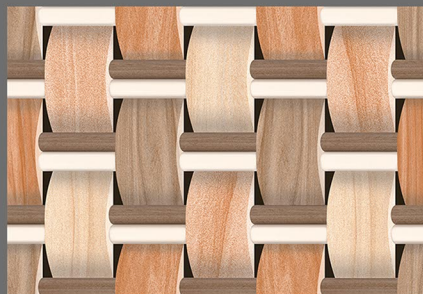
JADE-14



JADE-15



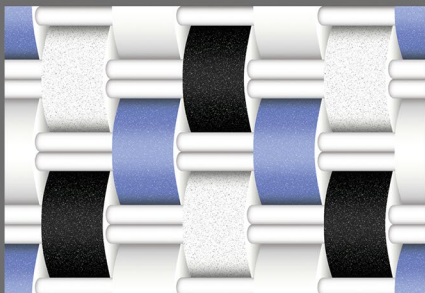
EL-AC-01



EL-AC-02



EL-AC-03



EL-AC-05



EL-Y-05





EL-AB-01



EL-AB-02



EL-AB-18



EL-Y-01



EL-Y-02



EL-Y-03



EL-Y-04



EL-Y-06



EL-Y-07



EL-X-04





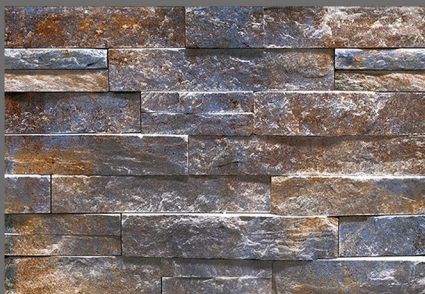
EL-X-01



EL-X-02



EL-X-03



EL-X-05



EL-V-01



EL-V-02



EL-V-03



EL-V-10





EL-V-04



EL-V-05



EL-V-06



EL-V-07



EL-V-08



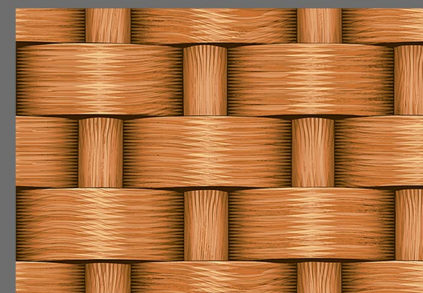
EL-V-09



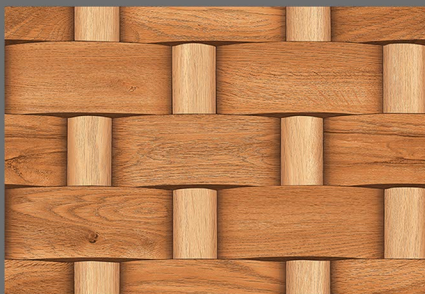
EL-V-11



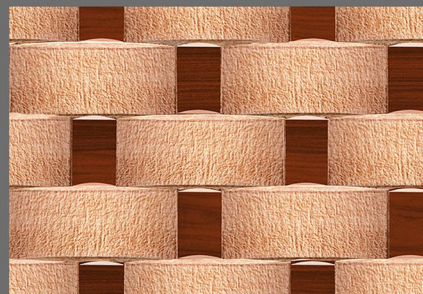
EL-V-12



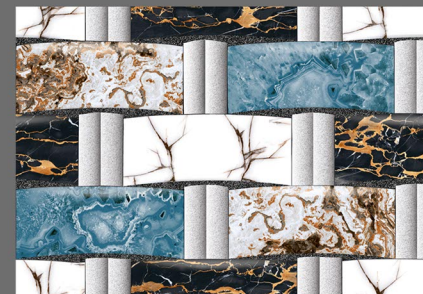
EL-V-13



EL-V-14



EL-V-15



EL-V-16



EL-V-17



EL-V-19



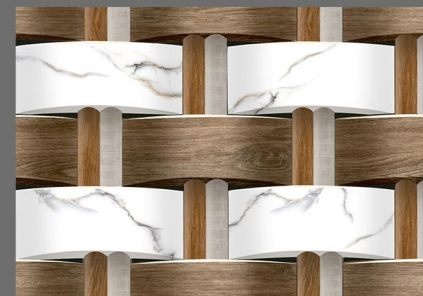
EL-V-20



EL-V-21



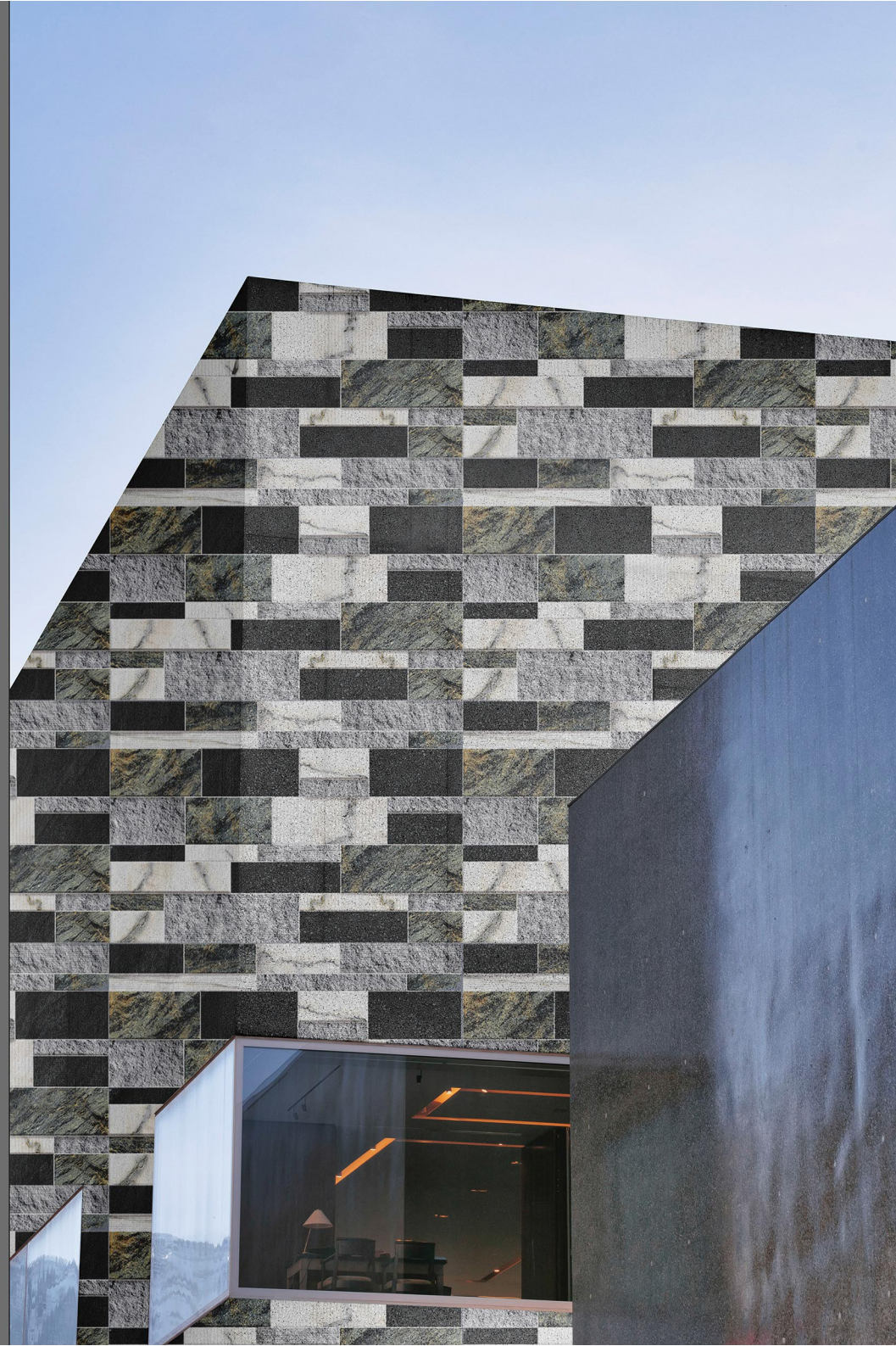
EL-V-22

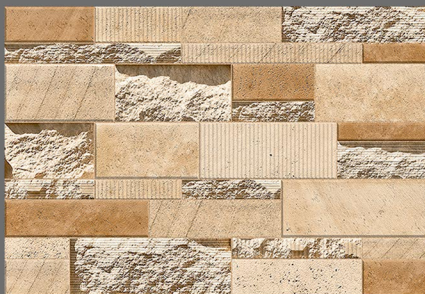


EL-V-23



EL-Q-13





EL-Q-01



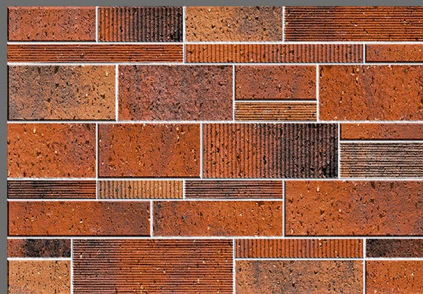
EL-Q-02



EL-Q-03



EL-Q-04



EL-Q-05



EL-Q-06



EL-Q-07



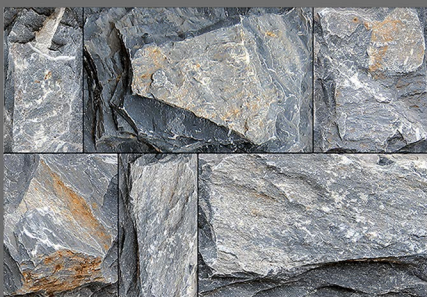
EL-Q-08



EL-Q-09



EL-P-01





EL-Q-10



EL-Q-11



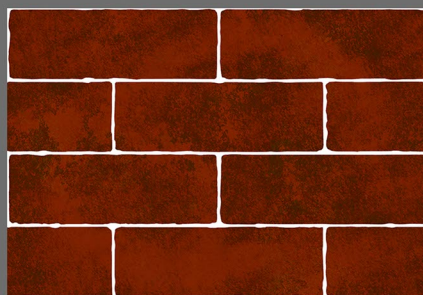
EL-Q-12



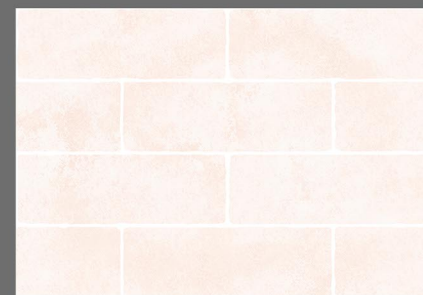
EL-P-09



EL-N-01



EL-N-03



EL-N-04



EL-N-02





EL-G-07

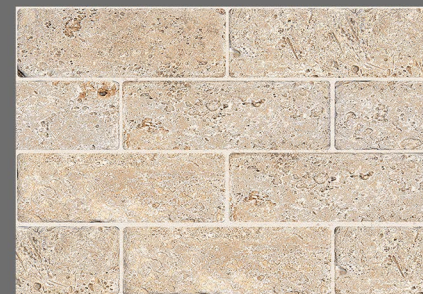




EL-N-07



EL-N-10



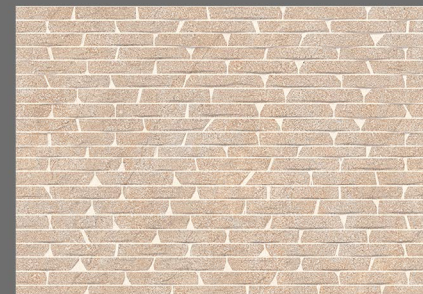
EL-N-11



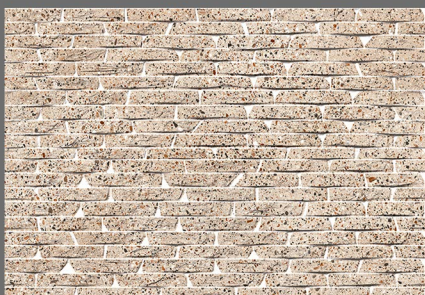
EL-G-01



EL-G-02



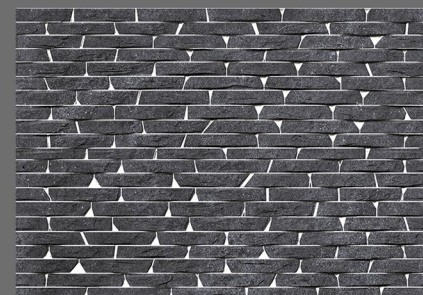
EL-G-03



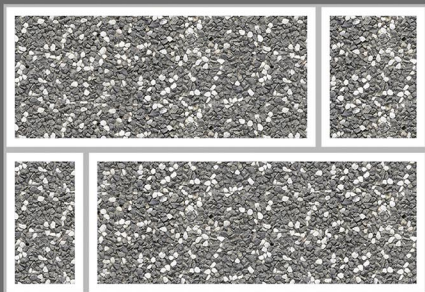
EL-G-04



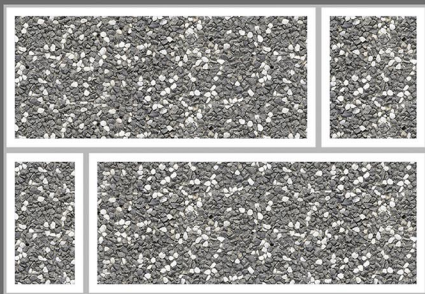
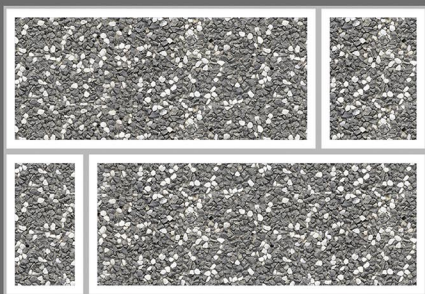
EL-G-05



EL-G-06



EL-D-05





EL-G-08



EL-G-09



EL-G-10



EL-G-11



EL-D-01



EL-D-02



EL-D-07



EL-D-09



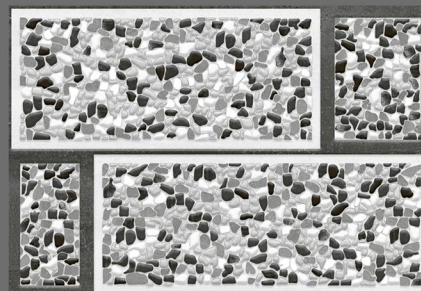
EL-D-10



EL-D-11



EL-D-12



EL-D-13



EL-D-14



EL-D-15



EL-D-16



EL-D-17



EL-F-03





EL-D-18



EL-D-19



EL-F-01



EL-2-02



EL-F-04



EL-F-05



EL-C-01





EL-C-02



EL-C-03



EL-C-04



EL-C-05



EL-C-06



EL-C-07



EL-C-08



EL-C-10



EL-PLAIN-09





5008



EL-PLAIN-01



EL-PLAIN-02



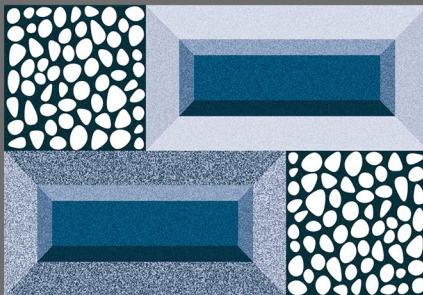
EL-PLAIN-03



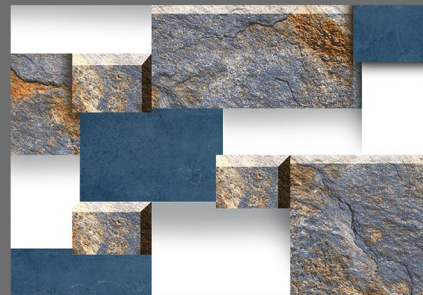
EL-PLAIN-04



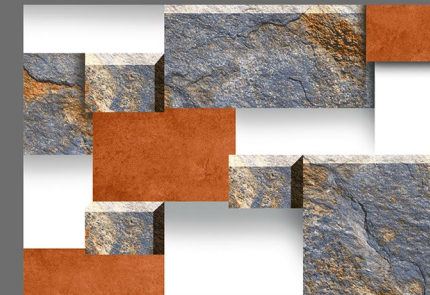
EL-PLAIN-06



EL-PLAIN-07



EL-PLAIN-08



EL-PLAIN-10



Transform Your Vision into Reality with ARM Global Tiles

Thank you for delving into the opulent world of ARM Global's luxury tiles. Our relentless pursuit of perfection ensures that each tile is a harmonious blend of elegance, durability, and innovation. Whether your project calls for the timeless charm of classic designs or the sleek sophistication of contemporary styles, ARM Global's tiles provide the perfect foundation for your creative vision.

Connect with us to experience unparalleled quality and bespoke service. Join our distinguished clientele who trust ARM Global for their most prestigious projects, and let us help you elevate your spaces to new heights of luxury and refinement.

www.armglobal.in